

CANNES BANANE: FULLY RENOVATED 2-BEDROOM APARTMENT FOR SALE

970 000 €

Ref 2168 AD

Cannes - Apartment 700 sq ft

VANEAU
Luxury Real Estate



About this property

Exclusivity Ideally located in the very heart of Cannes city center, within the highly sought-after Banane district, this apartment enjoys a prime address just steps away from Rue d'Antibes, the beaches, and the Palais des Festivals. Set within a fully renovated building with PRM (disabled) access, this two-bedroom apartment of 63.85 sqm is located on the 2nd floor. The layout features a bright living area with an open-plan kitchen space, two bedrooms, and a shower room. The kitchen has intentionally not been installed, offering future owners the freedom to design and fit a kitchen according to their own taste and project. Thanks to its exceptional central location and the quality of the building's renovation, this property is ideal as a pied-à-terre or as a high-yield rental investment, particularly for congress and seasonal rentals. A rare opportunity in one of Cannes's most desirable neighborhoods. Visual not contractual à Layout project created using artificial intelligence from a real photograph of the property.

Alexandre DUQUESNES

✉ alexandre@cannes-impact.com

P [+33637811631](tel:+33637811631)

Vaneau Cannes by Impact
45, Boulevard de la Croisette
06400 Cannes

Price : 970 000 €

Surface : 700 sq ft

Rooms : 3

Bedrooms : 2

Floors : 4

Bathrooms : 0

Shower rooms : 1

Elevator : Yes

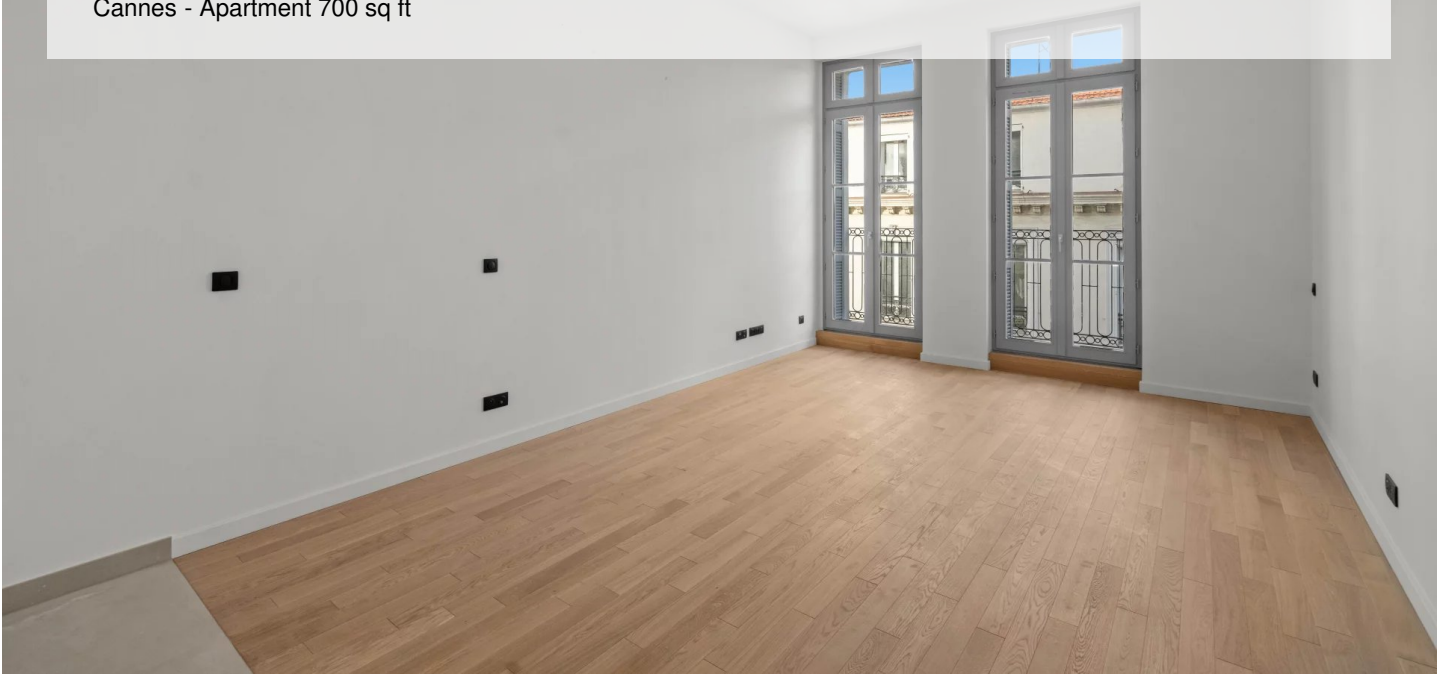
CANNES BANANE: FULLY RENOVATED 2-BEDROOM APARTMENT FOR SALE

970 000 €

Ref 2168 AD

Cannes - Apartment 700 sq ft

VANEAU
Luxury Real Estate



CANNES BANANE: FULLY RENOVATED 2-BEDROOM APARTMENT FOR SALE

970 000 €

Ref 2168 AD

Cannes - Apartment 700 sq ft

VANEAU
Luxury Real Estate





VANEAU LOCATION

Une équipe dédiée à Paris,
Neuilly et Boulogne



VANEAU

Immobilier de prestige depuis
1972



VANEAU VIAGER

30 ans d'expérience en vente
viagère



VANEAU BUREAUX & COMMERCES

+10 000 offres disponibles

VANEAU C'EST AUSSI



VANEAU PATRIMOINE

Dispositifs de défiscalisation,
SCPI, Assurances Vie



VANEAU DIGITAL NEUF

La plate-forme digitale 100%
immobilier neuf



GESTION LOCATIVE

GTF, plus de 7 000 lots gérés à
Paris



COURTAGE CRÉDITS

Exell Crédit immobiliers
Assurances emprunteurs

140 collaborateurs

1200 signatures par an

1000 immeubles par an

2.5 milliards d'actifs gérés