

PARIS 6 AND PARIS 14 - VAVIN - MONTPARNASSE

2 390 000 €

Ref 86691517A

Paris 6ème - Apartment 1601 sq ft

VANEAU
Luxury Real Estate



About this property

Discover this charming 148.73 m² (Loi Carrez) apartment located in the emblematic Montparnasse district, on the fourth floor by elevator of a beautiful 1930s building. This spacious space comprises three bedrooms and a total of six rooms, making it ideal for family living or welcoming guests in a warm and friendly setting. An entrance gallery leads to a sunny triple reception room with unobstructed views and trees. An open-plan kitchen with laundry area, bathroom with toilet, shower room and separate toilet complete this property. The privileged location in Montparnasse offers direct access to a wide range of services, shops and public transport. Loi ALUR: Mandat N° 21810 - Co-ownership including 193 lots - Annual share of the provisional budget 3600 EUR - No proceedings in progress (articles 29-1A/29-1 loi 65-557, L.615-6 du CCH) Information on the risks to which this property is exposed is available on the Géorisques website: www.georisques.gouv.fr - Details of our pricing on <http://www.vaneau.fr/fr/nos-honoraires-paris-neuilly>

Vaneau Bac Saint-Germain

✉ bac@vaneau.fr

P +33 (0)1 45 55 46 63

VANEAU BAC SAINT-GERMAIN 7th

25, rue Vaneau 75007 Paris

Price : 2 390 000 €

Surface : 1601 sq ft

Rooms : 6

Bedrooms : 3

Floors : 7

Bathrooms : 1

Shower rooms : 1

Elevator : Yes

Digicode : Yes

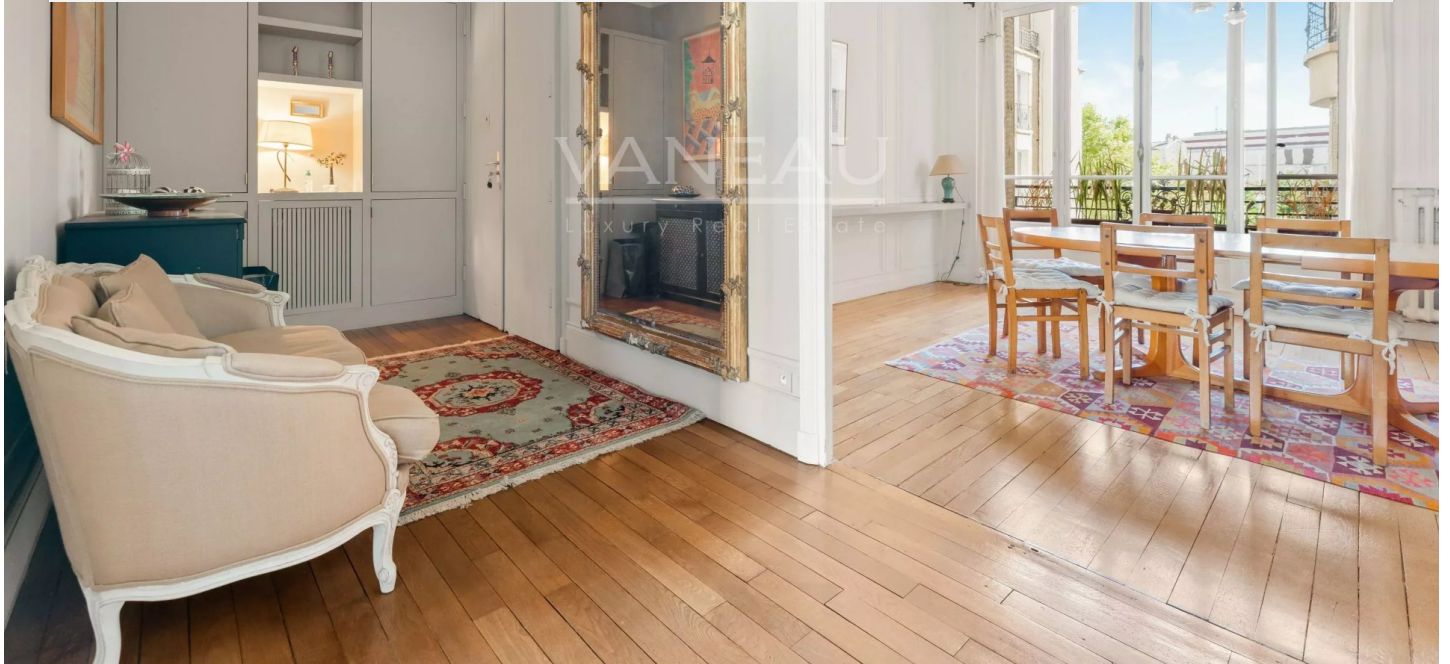
PARIS 6 AND PARIS 14 - VAVIN - MONTPARNASSE

2 390 000 €

Ref 86691517A

Paris 6ème - Apartment 1601 sq ft

VANEAU
Luxury Real Estate



PARIS 6 AND PARIS 14 - VAVIN - MONTPARNASSE

2 390 000 €

Ref 86691517A

Paris 6ème - Apartment 1601 sq ft

VANEAU
Luxury Real Estate





VANEAU LOCATION

Une équipe dédiée à Paris,
Neuilly et Boulogne



VANEAU

Immobilier de prestige depuis
1972



VANEAU VIAGER

30 ans d'expérience en vente
viagère



VANEAU BUREAUX & COMMERCES

+10 000 offres disponibles

VANEAU C'EST AUSSI



VANEAU PATRIMOINE

Dispositifs de défiscalisation,
SCPI, Assurances Vie



VANEAU DIGITAL NEUF

La plate-forme digitale 100%
immobilier neuf



GESTION LOCATIVE

GTF, plus de 7 000 lots gérés à
Paris



COURTAGE CRÉDITS

Exell Crédit immobiliers
Assurances emprunteurs

140 collaborateurs

1200 signatures par an

1000 immeubles par an

2.5 milliards d'actifs gérés