

## TWO ROOMS WITH SOUTH-FACING BALCONY - MODERN BUILDING

468 000 €

Ref 84937698X

Boulogne-Billancourt - Apartment 517 sq ft

**VANEAU**  
Luxury Real Estate



### About this property

Boulogne - In a 2008 building of good standing, 2-room apartment of 47.75m<sup>2</sup> Carrez law with balcony. Located on the 3rd floor with elevator, this property includes a bright living room with a south-facing balcony, an open fitted and equipped kitchen, a bedroom with storage and access to the balcony, a bathroom with WC. Optimized plan without wasted space. Unobstructed view. Perfect condition. Bike storage. Condominium of 13 main lots. The fees are paid by the seller. No ongoing procedures under articles 29-1 A and 29-1 of the 1965 law and article L.615-6 of the CCH. Estimated annual energy costs of the property: between euros530 and euros750. Information on the risks to which this property is exposed is available on the Georisque website: [www.georisques.gouv.fr](http://www.georisques.gouv.fr)

### Vaneau Boulogne

✉ [boulogne@vaneau.fr](mailto:boulogne@vaneau.fr)

P +33 (0)1 46 04 60 60

VANEAU BOULOGNE

41 , route de la reine 92100

Boulogne

**Price :** 468 000 €

**Surface :** 517 sq ft

**Rooms :** 2

**Bedrooms :** 1

**Floors :** 7

**Bathrooms :** 1

**Shower rooms :** 0

**Balconies :** Yes

**Elevator :** Yes

**Digicode :** Yes

**Intercom :** Yes

# TWO ROOMS WITH SOUTH-FACING BALCONY - MODERN BUILDING

468 000 €

Ref 84937698X

Boulogne-Billancourt - Apartment 517 sq ft

**VANEAU**  
Luxury Real Estate



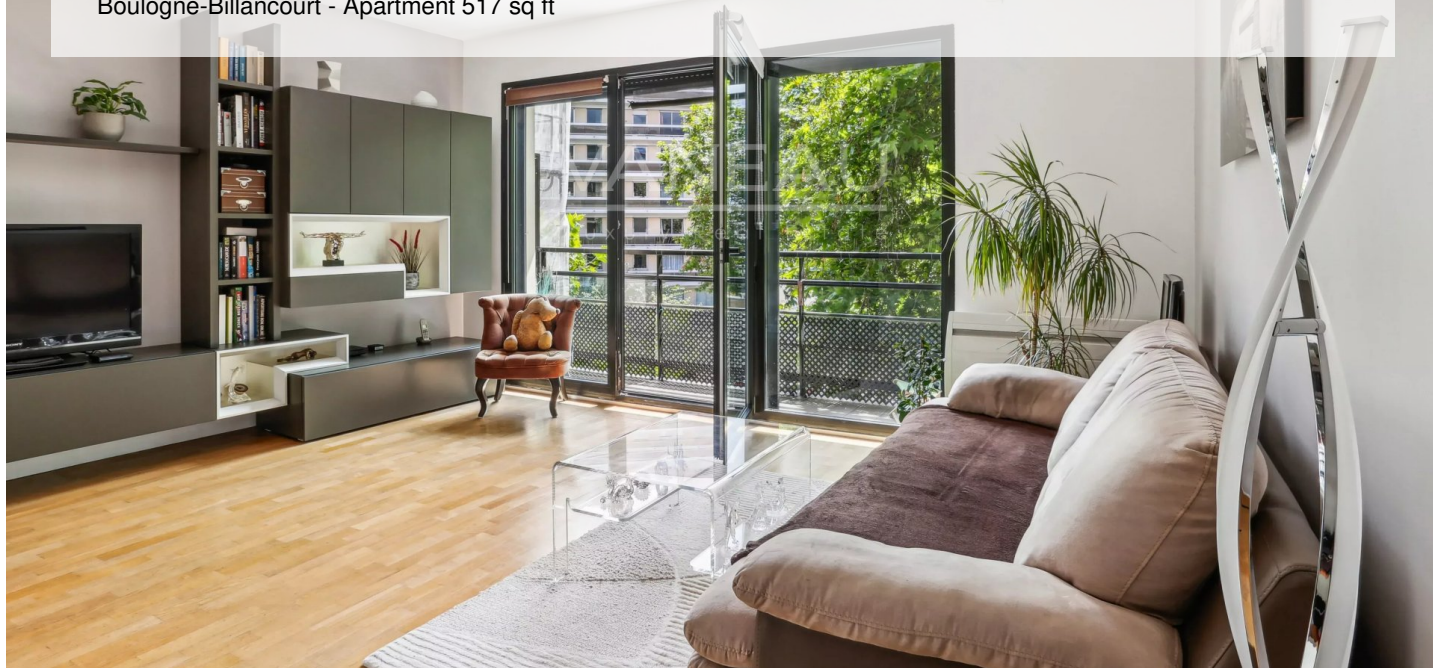
## TWO ROOMS WITH SOUTH-FACING BALCONY - MODERN BUILDING

468 000 €

Ref 84937698X

Boulogne-Billancourt - Apartment 517 sq ft

**VANEAU**  
Luxury Real Estate





### VANEAU LOCATION

Une équipe dédiée à Paris,  
Neuilly et Boulogne



### VANEAU

Immobilier de prestige depuis  
1972



### VANEAU VIAGER

30 ans d'expérience en vente  
viagère



### VANEAU BUREAUX & COMMERCES

+10 000 offres disponibles

# VANEAU C'EST AUSSI



### VANEAU PATRIMOINE

Dispositifs de défiscalisation,  
SCPI, Assurances Vie



### VANEAU DIGITAL NEUF

La plate-forme digitale 100%  
immobilier neuf



### GESTION LOCATIVE

GTF, plus de 7 000 lots gérés à  
Paris



### COURTAGE CRÉDITS

Exell Crédit immobiliers  
Assurances emprunteurs

140 collaborateurs

1200 signatures par an

1000 immeubles par an

2.5 milliards d'actifs gérés