

BOULOGNE NORTH - APARTMENT WITH BALCONY

1 055 000 €

Ref 86924731B

Boulogne-Billancourt - Apartment 920 sq ft

VANEAU
Luxury Real Estate



About this property

Top floor - Unobstructed view of the garden Close to shops on Jean Baptiste Clément Street and at the edge of the Bois de Boulogne, this 79.46m² apartment occupies the third and last floor of a secure high-standard residence dating from 1972. Fully renovated, this property attracts immediately with its fluid layout and open view upon entry. The double angled reception and semi-open kitchen let in plenty of light thanks to the South/South-West exposure. The large 20m² continuous balcony, like a natural extension of the apartment, borders all the rooms. On the night side, there is a bedroom with air conditioning, a shower room, a separate dressing room, and separate toilets. A cellar completes the property. An underground parking space is offered at an additional cost. The green surroundings in the city center, the preserved quiet, and the quality of amenities make it a particularly sought-after place to live.

Vaneau Auteuil - Passy

✉ auteuil-passy@vaneau.fr

P +33 (0)1 56 75 20 00

VANEAU AUTEUIL PASSY

16th

6 , Rue Donizetti 75016 Paris

Price : 1 055 000 €

Surface : 920 sq ft

Rooms : 3

Bedrooms : 2

Floors : 3

Bathrooms : 0

Shower rooms : 1

Cellar : Yes

Balconies : Yes

Elevator : Yes

Parkings : 1

Digicode : Yes

Intercom : Yes

Caretaker : Yes

BOULOGNE NORTH - APARTMENT WITH BALCONY

1 055 000 €

Ref 86924731B

Boulogne-Billancourt - Apartment 920 sq ft

VANEAU
Luxury Real Estate



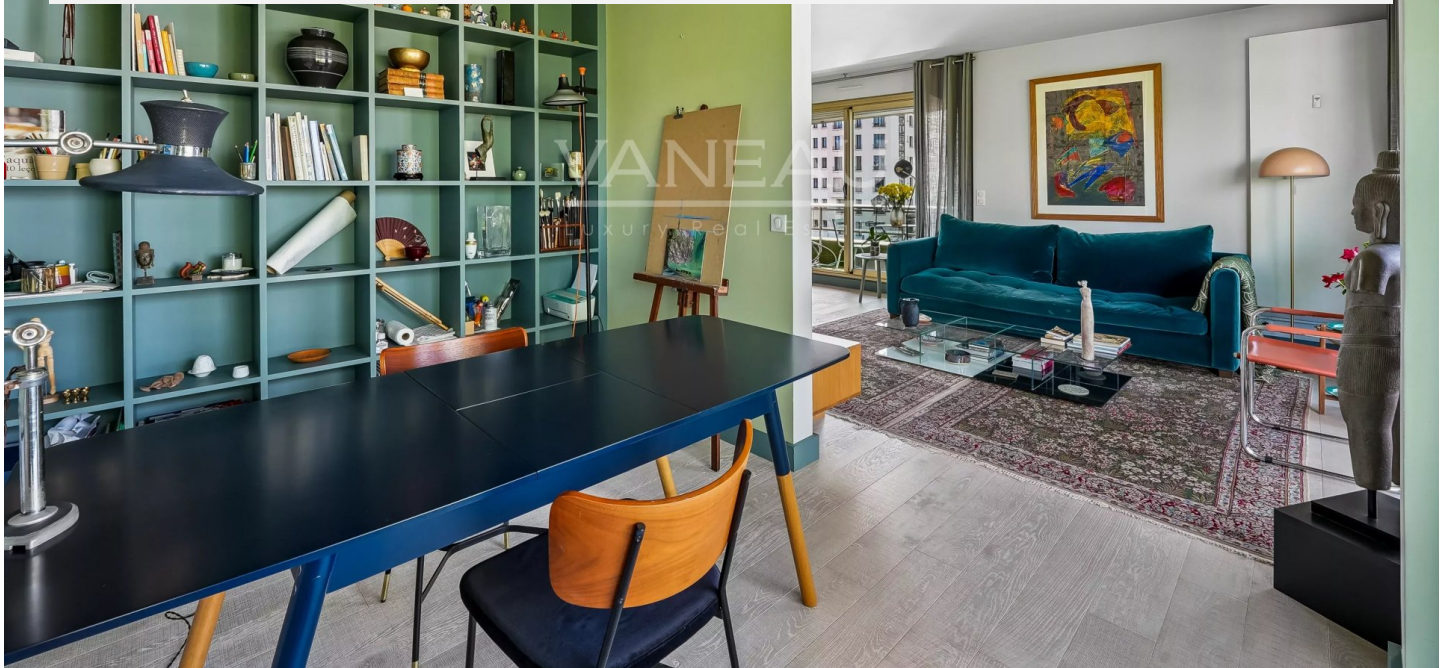
BOULOGNE NORTH - APARTMENT WITH BALCONY

1 055 000 €

Ref 86924731B

Boulogne-Billancourt - Apartment 920 sq ft

VANEAU
Luxury Real Estate





VANEAU LOCATION

Une équipe dédiée à Paris,
Neuilly et Boulogne



VANEAU

Immobilier de prestige depuis
1972



VANEAU VIAGER

30 ans d'expérience en vente
viagère



VANEAU BUREAUX & COMMERCES

+10 000 offres disponibles

VANEAU C'EST AUSSI



VANEAU PATRIMOINE

Dispositifs de défiscalisation,
SCPI, Assurances Vie



VANEAU DIGITAL NEUF

La plate-forme digitale 100%
immobilier neuf



GESTION LOCATIVE

GTF, plus de 7 000 lots gérés à
Paris



COURTAGE CRÉDITS

Exell Crédit immobiliers
Assurances emprunteurs

140 collaborateurs

1200 signatures par an

1000 immeubles par an

2.5 milliards d'actifs gérés