

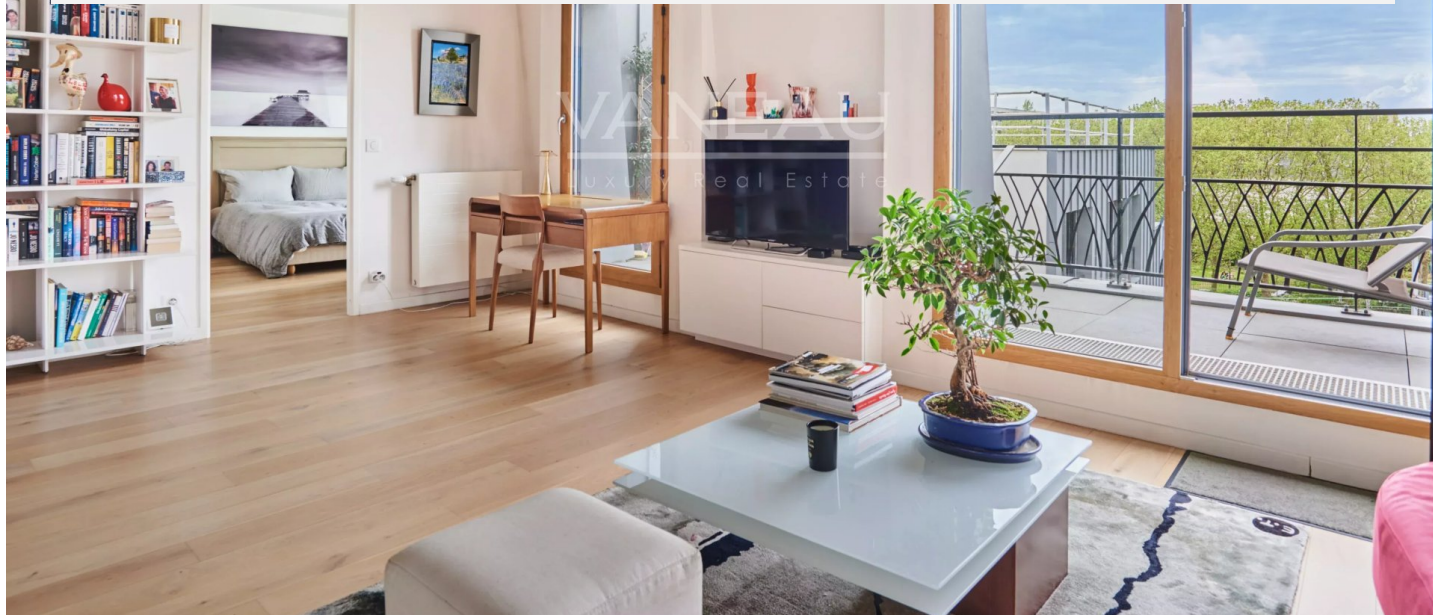
PARIS XIV - DENFERT-ROCHEREAU - LAST FLOOR APARTMENT WITH TERRAC

779 000 €

Ref 86891286B

Paris 14ème - Apartment 538 sq ft

VANEAU
Luxury Real Estate



About this property

Ideally located near the Saint-Jacques and Denfert-Rochereau metros, we are pleased to present exclusively an apartment on the seventh and top floor of an eco-friendly building from 2018. It is composed as follows: An entrance with closet, a double living room with an American kitchen featuring high-quality materials opening onto a 6.5m² terrace, a bedroom with a closet leading to a spacious shower room and a separate toilet. This property also includes home automation equipment for lighting and remote heating. It involves urban heating (CPCU). The building has accessible facilities for people with reduced mobility. A cellar completes the property.

Vaneau Sèvres Lecourbe

✉ sevres-lecourbe@vaneau.fr

P +33 (0)1 44 49 70 70

VANEAU SÈVRES-
LECOURBE 15th

58 , rue Lecourbe 75015 Paris

Price : 779 000 €

Surface : 538 sq ft

Rooms : 2

Bedrooms : 1

Floors : 7

Bathrooms : 1

Shower rooms : 0

Elevator : Yes

Digicode : Yes

Alarm : Yes

Terrace : Yes

PARIS XIV - DENFERT-ROCHEREAU - LAST FLOOR APARTMENT WITH TERRAC

779 000 €

Ref 86891286B

Paris 14ème - Apartment 538 sq ft

VANEAU
Luxury Real Estate



PARIS XIV - DENFERT-ROCHEREAU - LAST FLOOR APARTMENT WITH TERRAC

779 000 €

Ref 86891286B

Paris 14ème - Apartment 538 sq ft

VANEAU
Luxury Real Estate





VANEAU LOCATION

Une équipe dédiée à Paris,
Neuilly et Boulogne



VANEAU

Immobilier de prestige depuis
1972



VANEAU VIAGER

30 ans d'expérience en vente
viagère



VANEAU BUREAUX & COMMERCES

+10 000 offres disponibles

VANEAU C'EST AUSSI



VANEAU PATRIMOINE

Dispositifs de défiscalisation,
SCPI, Assurances Vie



VANEAU DIGITAL NEUF

La plate-forme digitale 100%
immobilier neuf



GESTION LOCATIVE

GTF, plus de 7 000 lots gérés à
Paris



COURTAGE CRÉDITS

Exell Crédit immobiliers
Assurances emprunteurs

140 collaborateurs

1200 signatures par an

1000 immeubles par an

2.5 milliards d'actifs gérés