

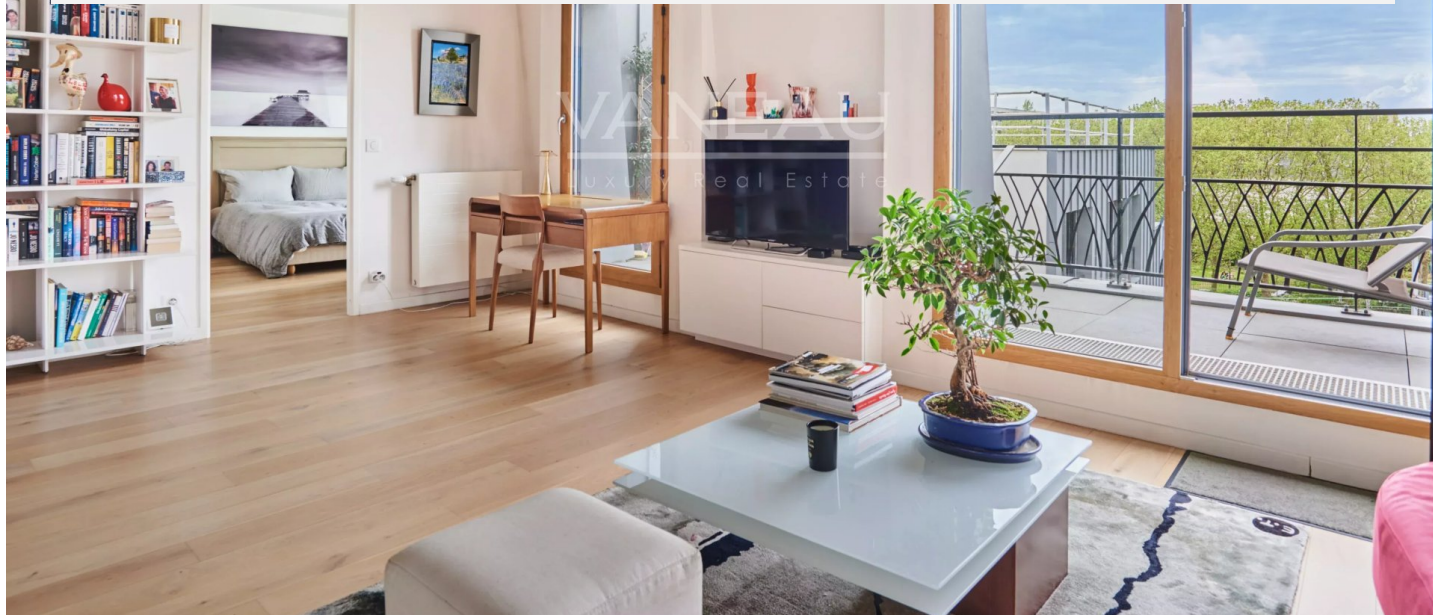
# PARIS XIV - DENFERT-ROCHEREAU - TOP FLOOR APARTMENT WITH TERRACE

779 000 €

Ref 86891286C

Paris 14ème - Apartment 562 sq ft

**VANEAU**  
Luxury Real Estate



## About this property

Ideally located near the Saint-Jacques and Denfert-Rochereau metro stations, we are pleased to present exclusively a 50.01m<sup>2</sup> Carrez law apartment with a 6.5m<sup>2</sup> terrace (for a weighted area of 52.17m<sup>2</sup>) on the seventh and top floor of an eco-friendly building from 2018. It consists of the following: an entrance with a closet, a double living room with an open kitchen with high-quality materials, opening onto a 6.5m<sup>2</sup> terrace, a bedroom with a closet accessing a spacious bathroom and a separate toilet. This property is also equipped with home automation devices for lighting and remote heating. It uses district heating (CPCU). The building is accessible for people with reduced mobility. A cellar completes this property.

## Vaneau Sèvres Lecourbe

✉ [sevres-lecourbe@vaneau.fr](mailto:sevres-lecourbe@vaneau.fr)

P [+33 \(0\)1 44 49 70 70](tel:+330144497070)

VANEAU SÈVRES-  
LECOURBE 15th  
58 , rue Lecourbe 75015 Paris

**Price :** 779 000 €

**Surface :** 562 sq ft

**Rooms :** 2

**Bedrooms :** 1

**Floors :** 7

**Bathrooms :** 1

**Shower rooms :** 0

**Elevator :** Yes

**Digicode :** Yes

**Alarm :** Yes

**Terrace :** Yes

# PARIS XIV - DENFERT-ROCHEREAU - TOP FLOOR APARTMENT WITH TERRACE

779 000 €

Ref 86891286C

Paris 14ème - Apartment 562 sq ft

**VANEAU**  
Luxury Real Estate



# PARIS XIV - DENFERT-ROCHEREAU - TOP FLOOR APARTMENT WITH TERRACE

779 000 €

Ref 86891286C

Paris 14ème - Apartment 562 sq ft

**VANEAU**  
Luxury Real Estate





### VANEAU LOCATION

Une équipe dédiée à Paris,  
Neuilly et Boulogne



### VANEAU

Immobilier de prestige depuis  
1972



### VANEAU VIAGER

30 ans d'expérience en vente  
viagère



### VANEAU BUREAUX & COMMERCES

+10 000 offres disponibles

# VANEAU C'EST AUSSI



### VANEAU PATRIMOINE

Dispositifs de défiscalisation,  
SCPI, Assurances Vie



### VANEAU DIGITAL NEUF

La plate-forme digitale 100%  
immobilier neuf



### GESTION LOCATIVE

GTF, plus de 7 000 lots gérés à  
Paris



### COURTAGE CRÉDITS

Exell Crédit immobiliers  
Assurances emprunteurs

140 collaborateurs

1200 signatures par an

1000 immeubles par an

2.5 milliards d'actifs gérés