

PARIS XVITH - MUETTE - APARTMENT WITH GARDEN.

1 015 000 €

Ref 86840229D

Paris 16ème - Apartment 681 sq ft

VANEAU
Luxury Real Estate



About this property

Located in a secure luxury condominium with caretaker, close to the Marmottan Museum, this charming garden of 64 m² enjoys a green and peaceful environment. The apartment consists of an entrance, guest toilet, as well as a kitchen equipped and semi-open, overlooking a bright living room extended by a pleasant terrace of 20 m². The sleeping area offers a large bedroom with its en-suite bathroom, all in an absolute calm. A cellar complete this property. Possibility to acquire a parking space above the price at 60,000 euros. Ideal for a pied-à-terre or a rental investment. Well sold furnished.

Vaneau Trocadéro

✉ trocadero@vaneau.fr

P [+33 \(0\)1 47 04 28 00](tel:+330147042800)

VANEAU TROCADÉRO 16th
19, avenue Raymond
Poincaré 75016 Paris

Price : 1 015 000 €

Surface : 681 sq ft

Rooms : 2

Bedrooms : 1

Floors : 8

Bathrooms : 1

Shower rooms : 0

Cellar : Yes

Elevator : Yes

Parkings : 1

Digicode : Yes

Terrace : Yes

Caretaker : Yes

PARIS XVITH - MUETTE - APARTMENT WITH GARDEN.

1 015 000 €

Ref 86840229D

Paris 16ème - Apartment 681 sq ft

VANEAU
Luxury Real Estate



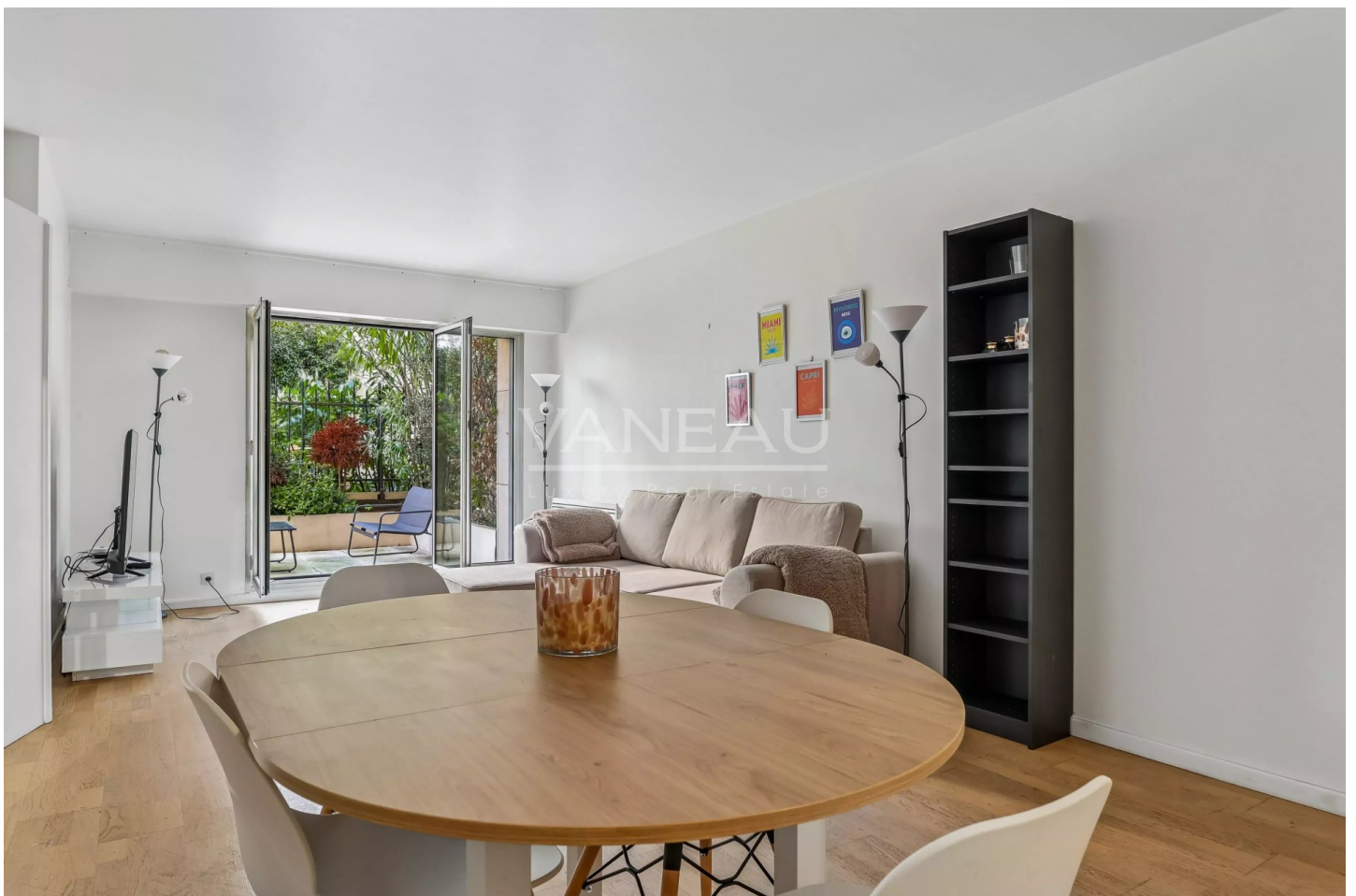
PARIS XVITH - MUETTE - APARTMENT WITH GARDEN.

1 015 000 €

Ref 86840229D

Paris 16ème - Apartment 681 sq ft

VANEAU
Luxury Real Estate





VANEAU LOCATION

Une équipe dédiée à Paris,
Neuilly et Boulogne



VANEAU

Immobilier de prestige depuis
1972



VANEAU VIAGER

30 ans d'expérience en vente
viagère



VANEAU BUREAUX & COMMERCES

+10 000 offres disponibles

VANEAU C'EST AUSSI



VANEAU PATRIMOINE

Dispositifs de défiscalisation,
SCPI, Assurances Vie



VANEAU DIGITAL NEUF

La plate-forme digitale 100%
immobilier neuf



GESTION LOCATIVE

GTF, plus de 7 000 lots gérés à
Paris



COURTAGE CRÉDITS

Exell Crédit immobiliers
Assurances emprunteurs

140 collaborateurs

1200 signatures par an

1000 immeubles par an

2.5 milliards d'actifs gérés