

EXCLUSIVITE / MAGNIFICENT TWO-BEDROOM APARTMENT IN ABSOLUTE CALM ON AVENUE VICTOR HUGO

VANEAU
Luxury Real Estate

950 000 €

Ref 83359467

Paris 16ème - Appartement 546 sq ft



About this property

PARIS XVIe - AVENUE VICTOR HUGO In one of Avenue Victor Hugo's finest luxury buildings with concierge service, Groupe Vaneau presents a 50.72m² Loi Carrez first floor apartment in a quiet courtyard setting, completely refurbished. On the first floor, it comprises a living room with open-plan kitchen, a shower room with toilet, and a skylight that brings light to the souplex area, which includes a lounge/bedroom with dressing room. AUTHORIZED LIBERAL PROFESSION Private use of an outdoor space in the building's courtyard and two storage rooms. Secure condominium (digicode, intercom).

Paola SION

✉ paola.sion@vaneau.fr

P [+33147042800](tel:+33147042800)

VANEAU TROCADÉRO 16th
19, avenue Raymond
Poincaré 75016 Paris

Price : 950 000 €

Surface : 546 sq ft

Rooms : 2

Bedrooms : 0

Floors : 7

Bathrooms : 0

Shower rooms : 1

Elevator : Yes

Digicode : Yes

Intercom : Yes

Caretaker : Yes

**EXCLUSIVITE / MAGNIFICENT TWO-BEDROOM
APARTMENT IN ABSOLUTE CALM ON AVENUE VICTOR
HUGO**

VANEAU
Luxury Real Estate

950 000 €

Ref 83359467

Paris 16ème - Appartement 546 sq ft



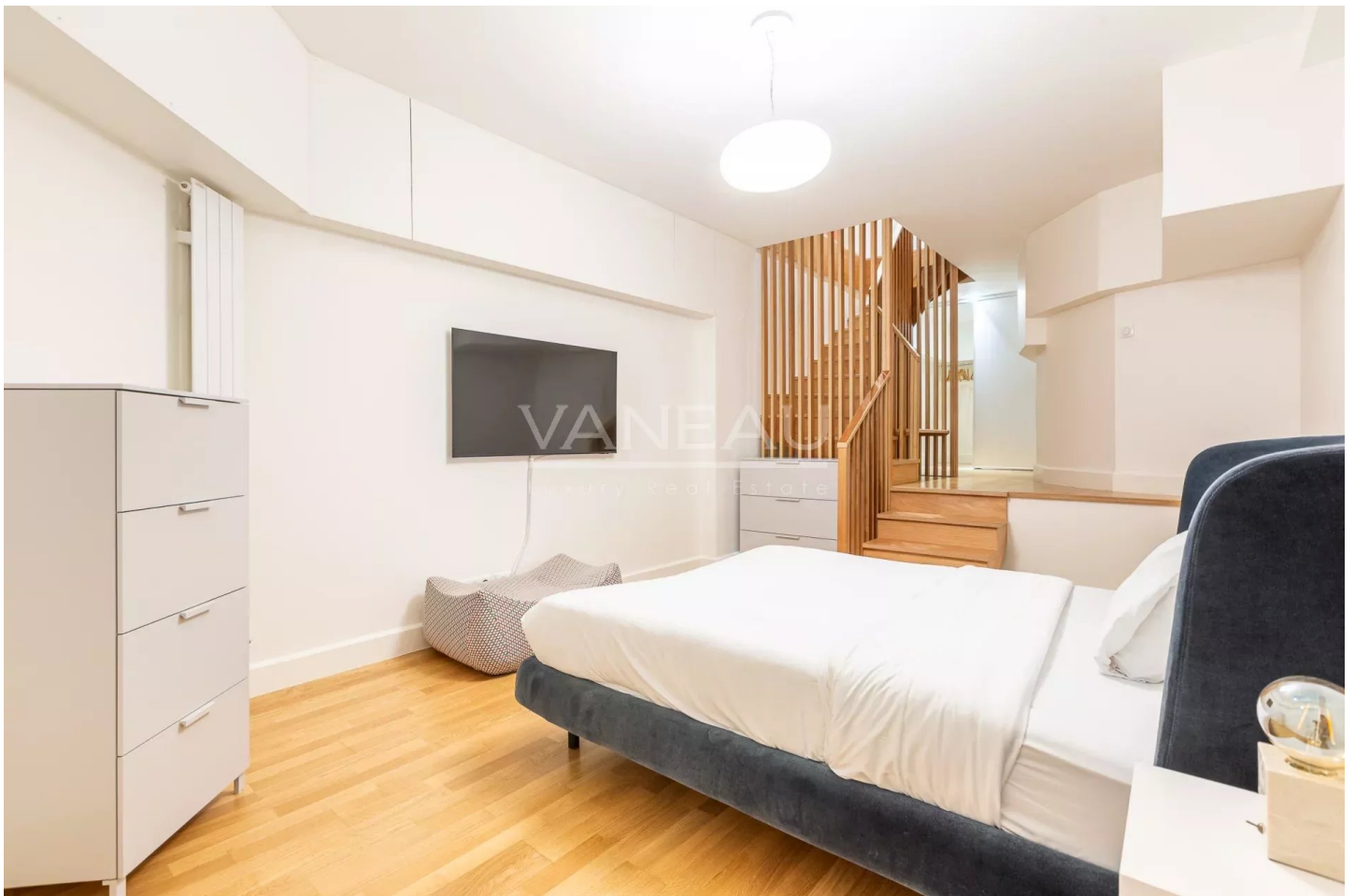
**EXCLUSIVITE / MAGNIFICENT TWO-BEDROOM
APARTMENT IN ABSOLUTE CALM ON AVENUE VICTOR
HUGO**

VANEAU
Luxury Real Estate

950 000 €

Ref 83359467

Paris 16ème - Appartement 546 sq ft





VANEAU LOCATION

Une équipe dédiée à Paris,
Neuilly et Boulogne



VANEAU

Immobilier de prestige depuis
1972



VANEAU VIAGER

30 ans d'expérience en vente
viagère



VANEAU BUREAUX & COMMERCES

+10 000 offres disponibles

VANEAU C'EST AUSSI



VANEAU PATRIMOINE

Dispositifs de défiscalisation,
SCPI, Assurances Vie



VANEAU DIGITAL NEUF

La plate-forme digitale 100%
immobilier neuf



GESTION LOCATIVE

GTF, plus de 7 000 lots gérés à
Paris



COURTAGE CRÉDITS

Exell Crédit immobiliers
Assurances emprunteurs

140 collaborateurs

1200 signatures par an

1000 immeubles par an

2.5 milliards d'actifs gérés